

# Champion®

The Dishwashing Machine Specialists

Project \_\_\_\_\_  
Item No. \_\_\_\_\_  
Quantity \_\_\_\_\_

## STANDARD FEATURES

- One-piece cast stainless steel upper & lower spray arm assemblies
- Standard vertical opening 20-3/4" [527]
- Wide 26" [660] leakproof doors, internally-fitted
- Front enclosure panels
- Stainless steel heavy-gauge construction, including base and feet
- Stainless steel pump and impeller
- Wash pump 2 Hp motor
- Electric tank heat
- Automatic tank fill
- 40°F internal booster
- Low-water tank heat protection
- Energy/rinse-saver device
- Anti-jam conveyor drive system
- Convenient top-mounted controls
- Common utility connections
- Pressure regulator valve (PRV)
- Door safety switch

## MODEL I 44

44" [1118] Single Tank  
High-Temperature  
Rack Conveyor Dishwashing Machine



Shown with Vent Cowl  
and Damper Option



MODEL I 44 RACK CONVEYOR

## SPECIFIER STATEMENT

Specified unit will be Champion Model I 44 high temperature rack conveyor dishwashing machine. Constructed of Type 304 stainless steel and measuring 44" [1118] long with 20-3/4" [527] vertical opening. Features top mounted control cabinet; upper and lower one-piece stainless steel spray arm assemblies. Large 26" [660] wash door with front access and safety switch. Anti-jam conveyor drive system.



International

Champion Industries, Inc.  
P. O. Box 4149, Winston-Salem, NC 27115 USA  
Tel: 800/532-8591 Fax: 336/661-1979  
[www.championindustries.com](http://www.championindustries.com)

# Champion<sup>®</sup>

The Dishwashing Machine Specialists

## MODEL I 44

44" [1118] Single Tank  
High-Temperature  
Rack Conveyor Dishwashing Machine

### EFFICIENT NEW SPRAY SYSTEM DESIGN

To make the E-Series more efficient and more forgiving we designed a new spray arm system that includes:

- Wall-of-water spray pattern via stainless steel fluted directional spray jets for quick and efficient washing
- Easily removable spray arm assembly for ease of cleaning
- Stainless steel pump housing and impeller
- Larger tanks hold more water for better washing results



Wall-of-Water  
Spray Pattern



One-Piece Cast Stainless  
Steel Spray Assembly

### INTEGRATED BOOSTER HEATER

As well as the E-Series performs, we created a way to make it perform even better. The electric booster heater is an exceptional value — engineered within the E-Series footprint to offer a variety of advantages over other booster designs, such as:

- Inter-plumbed and inter-wired
- One control shuts off washer and booster
- 15 kW for 40°F/22°C rise
- 24 kW for 70°F/39°C rise (optional)
- Conductive heat transfer to wash tank
- Stainless steel booster heater lasts the life of the machine
- Integrated design saves floor space



Large Heating Element



Stainless Steel  
Built-in Nested Booster



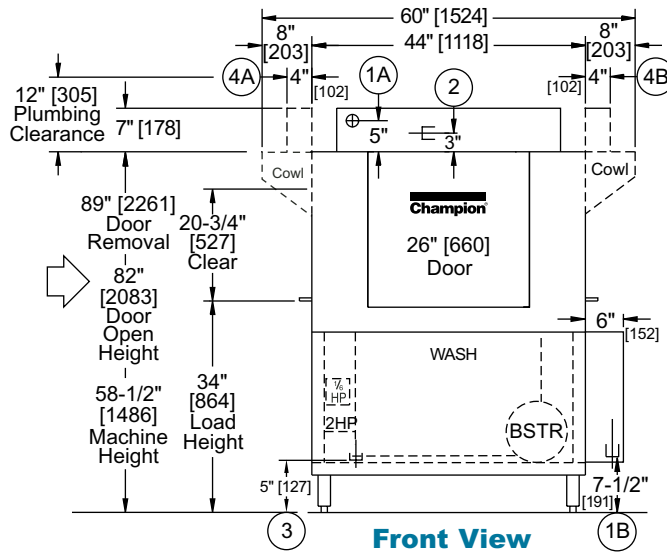
Two-Piece Scrap Screen



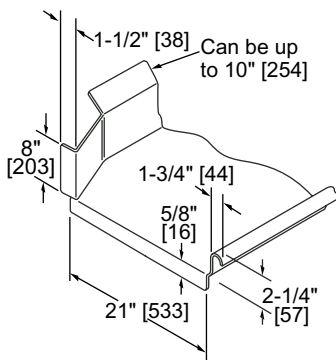
# MODEL I 44

44" [1118] Single Tank  
High-Temperature  
Rack Conveyor Dishwashing Machine

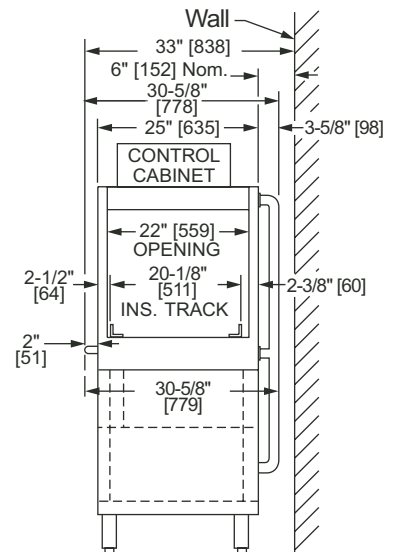
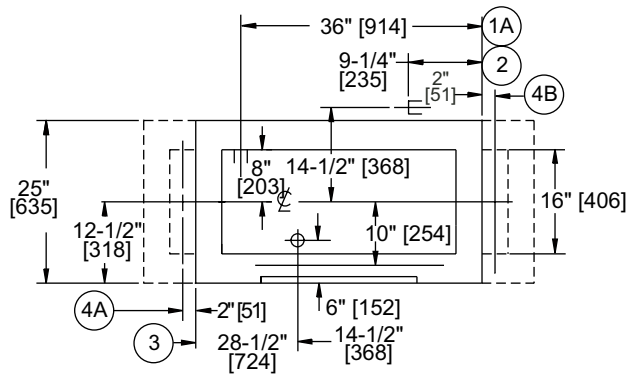
**Champion**<sup>®</sup>  
The Dishwashing Machine Specialists



**Left-to-Right Operation**



**Suggested Table Construction**



Due to an ongoing value analysis program at Champion, specifications contained in this catalog are subject to change without notice.

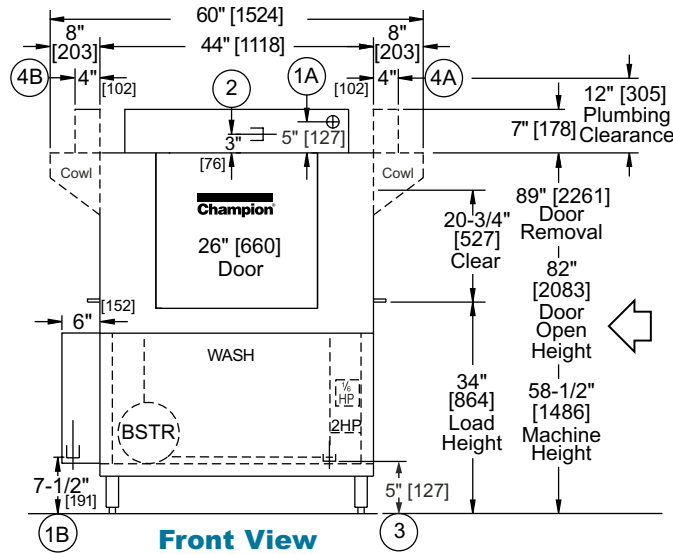
Champion Industries, Inc., P. O. Box 4149, Winston-Salem, NC 27115 USA • 800/532-8591 • Fax: 336/661-1979 • www.championindustries.com

# MODEL I 44

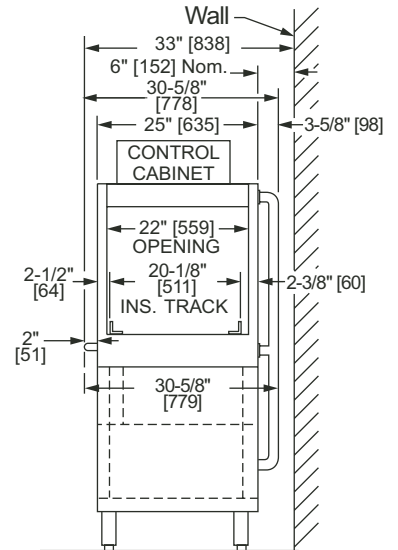
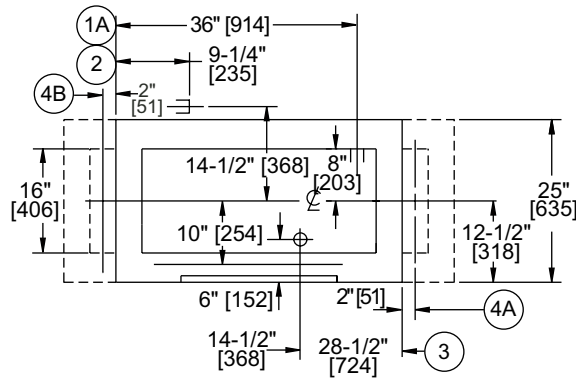
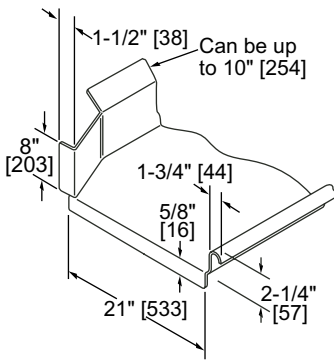
44" [1118] Single Tank  
High-Temperature  
Rack Conveyor Dishwashing Machine

# Champion®

The Dishwashing Machine Specialists



**Right-to-Left Operation**



**Suggested Table Construction**

**Plan View**

**End View**

# MODEL I 44

44" [1118] Single Tank  
High-Temperature  
Rack Conveyor Dishwashing Machine

**Champion**<sup>®</sup>  
The Dishwashing Machine Specialists

Volume crated: **122 cu. ft./3.5 cu. m.**  
Shipping weight crated: **750 lbs./340 kg.**

Dimensions shown in inches and [millimeters]

Utilities	
<b>1 Electrical</b>	<b>A</b> Machine connection <b>B</b> Booster connection
<b>2 Hot Water</b>	3/4" [19] NPT 140°F/60°C min. hot water connection. (40°F/22°C rise booster) 3/4" [19] NPT 110°F/49°C min. hot water connection. (70°F/39°C rise booster) Flow pressure 20-22 psi.
<b>3 Drain</b>	1-1/2" NPT machine connection. Maximum flow 15 gpm.
<b>4 Vents</b>	<b>A</b> Load end: 200 CFM @ 1/4" [6] S.P. <b>B</b> Unload end: 400 CFM @ 1/4" [6] S.P. (With blower-dryer increase room ventilation by 600 CFM.)

## MACHINE CONNECTION

Machine only			
Elec. Specs.	Rated Amps	Minimum Supply Ckt. Conductor Ampacity	Maximum Overcurrent Protective Device
220/60/3	47	60	60
380/50/3	47	60	60

## BOOSTER CONNECTION

40°F/22°C Rise – 15kW Electric built-in booster (booster only)			
Elec. Specs.	Rated Amps	Minimum Supply Ckt. Conductor Ampacity	Maximum Overcurrent Protective Device
220/60/3	83	110	110
280/50/3	83	110	110

70°F/39°C Rise – 24kW Electric built-in booster (booster only)			
Elec. Specs.	Rated Amps	Minimum Supply Ckt. Conductor Ampacity	Maximum Overcurrent Protective Device
220/60/3	105	115	115
380/50/3	105	115	115

## SPECIFICATIONS

### Capacity

Racks per hr.		208
Wash tank	US Gal.	21
	Liter	79
Conveyor speed (ft/min.)		5.8

### Motor Horsepower

Drive		1/6
Wash		2

### Water Consumption

Per hr. (max. use)	US Gal.	124
	Liters	469
Per rack	US Gal.	.60
	Liters	2

### Heating

Tank Heat, electric (kW)		15
Electric booster (built-in) (Available 40°F rise only)		15
Electric booster (optional) (kW supplied for 70°F rise)		24

### Venting

Load end (minimum CFM)		200
Unload end (minimum CFM)		400

### Standard 20" [508] x 20" [508] rack complement

Peg		2
Flat		1

**Warning:** Plumbing and electrical connections should be made by qualified personnel who will observe all the applicable plumbing, sanitary, safety codes and the National Electrical Code.

**Note:** Water Hammer Arrestor (meeting ASSE-1010 standard or equivalent) to be supplied (by others) in common water supply line at service connection.

**Venting Notes:** Fabricated duct size:  
3-7/8" x 15-7/8" (Outside dimensions)

Due to an ongoing value analysis program at Champion, specifications contained in this catalog are subject to change without notice.

Champion Industries, Inc., P. O. Box 4149, Winston-Salem, NC 27115 USA • 800/532-8591 • Fax: 336/661-1979 • www.championindustries.com

# MODEL I 44

44" [1118] Single Tank  
High-Temperature  
Rack Conveyor Dishwashing Machine

# Champion®

The Dishwashing Machine Specialists

## OPTIONS & ACCESSORIES

### Booster Heaters

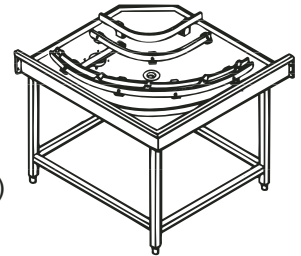
(completely interplumbed, controls are interwired)

- Electric: 24 kW (Optional 70°F rise) (3 phase only)
- Cantilever sideloader (with or without hood) for 90° load operation
- Extended pawl bar (extended drive unit) for use with load tabling
- 90° Motorized rack advance conveyor (unload)
- 180° Motorized rack advance conveyor (unload)
- Racks: peg or flat racks (specify type)
- Roller conveyor table (mobile or stationary)
- Table limit switch, unmounted (recommended on all rack conveyor installations)
- Vent cowl, stainless steel with 7" stack and locking damper
- Vent fan control

**Model MRA 90**

90° Motorized Rack Advance Curve

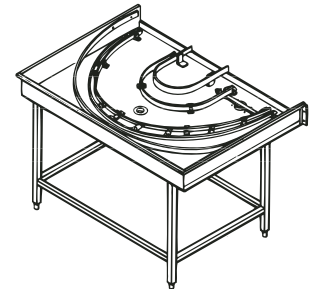
(Must be ordered with Roller Conveyor Table)



**Model MRA 180**

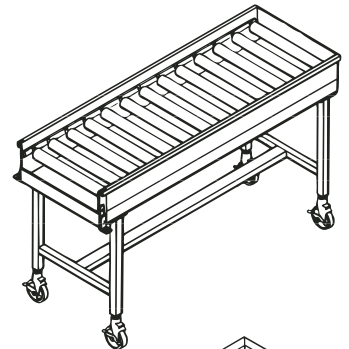
180° Motorized Rack Advance Curve

(Must be ordered with Roller Conveyor Table)



**Model RCT 64 or RCT 84**

Roller Conveyor Table



**Cantilever Sideloader**

(no hood)

